

UPDATE for Sanctuary Advisory Council:



CINMS Condition Report & Management Plan Revision Process

July 19, 2019

Outline



- Condition Report completion and web release
- Anticipated Schedule for Start of Management Plan Update Process
- Notice of Intent
- Public Scoping Meetings and Public Comment Period

Condition Report Completion

Office of National Marine Sanctuaries
National Oceanic and Atmospheric Administration
CHANNEL ISLANDS NATIONAL MARINE SANCTUARY



CONDITION REPORT
2016

CHANNEL ISLANDS

Posted Online, July 18, 2019:

<https://sanctuaries.noaa.gov/science/condition/cinms/>

(also easily accessible from channelislands.noaa.gov)

Web Story / Introduction to the Report:

<http://sanctuaries.noaa.gov/news/jul19/channel-islands-national-marine-sanctuary-faring-well.html>

(also easily accessible from channelislands.noaa.gov)

CINMS Condition Report Contents



Authors

Office of National Marine Sanctuaries

Channel Islands National Marine Sanctuary

Framework of Condition Reports

About this Report

Executive Summary

Site History and Resources

Driving Forces and Pressures on the Sanctuary

State of Drivers and Pressures

Driver Rating (Question 1)

Pressure Ratings (Questions 2–5)

MPA Effects: Marine Reserves & Conservation Areas

State of Sanctuary Resources

Water Quality (Questions 6–9)

The Warm Water Event

Habitat (Questions 10–11)

Living Resources (Questions 12–15)

Maritime Archaeological Resources (Questions 16–17)

State of Ecosystem Services

Introduction to Chumash Ecosystem Services Assessment

Chumash Ecosystem Services Assessment

Response to Pressures

Concluding Remarks

Acknowledgements

Cited Resources

Appendix A: Rating Scheme for System-wide Monitoring Questions

Appendix B: Consultation with Experts and Document Review

Appendix C: Driving Forces and Pressures Tables and Graphs

Appendix D: Water Quality Tables and Graphs

Appendix E: Habitat Tables and Graphs

Appendix F: Living Resources Tables and Graphs

Appendix G: Developing Indicators of Condition for CINMS

Appendix H: Ecosystem Services & Methods to Determine Ratings

Appendix I: Ecosystem Services Supplemental Information

Acknowledgements

This report would not have been possible without significant contributions from so many state and federal agencies, academic and non-governmental organization consortia partners, funders, and researchers. While individuals are mentioned below we would like to pay special recognition to the following: Bureau of Ocean Energy Management (BOEM), California Cooperative Oceanic Fisheries Investigations (CalCOFI), California Current Integrated Ecosystem Assessment (CCIEA), California Department of Fish and Wildlife (CDFW), Channel Islands National Park (CINP), Marine Applied Research and Exploration (MARE), Santa Barbara Channel Marine Biodiversity Observing Network (SBC MBON), Multi-agency Rocky Intertidal Network (MARINe), Partnership for Interdisciplinary Studies of Coastal Oceans (PISCO), Plumes and Blooms (PnB), Santa Barbara Coastal Long-term Ecological Research Project (SBC LTER), Southern California Coastal Observing System (SCCOOS), and Southern California Coastal Watershed Research Project (SCCWRP).

Our sincere thanks are extended to the peer reviewers of this document: Katie Arkema (Natural Capital Project, Stanford Woods Institute for the Environment), Steve Gaines (UCSB Bren School of Environmental Science and Management), Ben Ruttenburg (California Polytechnic State University), Mark Steele (CSU Northridge), and Charlie Whale (ONMS National MPA Center). We are also grateful to Katie Spidalieri for providing copy edits and Dayna Rignanese (NOS ONMS) for designing the final report.

Acknowledgements

Data Providers, Workshop Participants, and Content Reviewers

Jessie Alstatt (UCSB; CINMS), Paul Amaral (TowBoatUS), Clarissa Anderson (NOS IOOS SCCOOS), Kelly Andrews (NMFS SWFSC), Dennis Apeti (NOS NCCOS), Debbie Aseltine-Neilson (CDFW), Steven Bograd (NMFS SWFSC), Bureau of Oceanic Energy Management, Bureau of Safety and Environmental Enforcement, Jennifer Caselle (UCSB), Bryant Chesney (NMFS WCR), Michael Cohen (Channel Islands Adventure Co.), Carrie Culver (CA Sea Grant), Katie Davis (UCSB), Brian Emery (UCSB), Jack Engle (UCSB), Peter Etnoyer (NOS NCCOS), Toby Garfield (NMFS SWFSC), Kirsten Gilardi (SeaDoc Society), John Harms (NMFS NWFSC), Chris Harvey (NMFS NWFSC), Shannon Harrer (UCSB), Fernanda Henderikx Freitas (UCSB; PnB), John Hildebrand (SIO UCSD), Umi Hoshijima (UCSB), Li Kui (UCSB), David Kushner (CINP), Thomas Lamy (UCSB; SBC MBON), Andy Lauermann (MARE), Andrew Leising (NMFS SWFSC), Kurt Lieber (Ocean Defenders Alliance), Lindsay Marks (UCSB), Paul Matson (UCSB; BGSU), David Mazurkiewicz (CINP), Megan McKenna (SIO UCSD; NPS), Robert Miller (UCSB; SBC MBON), Brian Owens (CDFW), Mark Page (UCSB), Dave Perkesta (BOEM), Jessica Redfern (NMFS SWFSC), Dan Reed (UCSB), Dirk Rosen (MARE), Dan Rudnick (SIO UCSD), Heather Sagar (NMFS), Ken Schiff (SCCWRP), Isaac Schroeder (NMFS SWFSC), David Siegel (UCSB), Joshua Sprague (CINP), Andrew Thompson (NMFS SWFSC), Nick Tolimieri (NMFS NWFSC), Sloane Viola (UCSB), Robert Warner (UCSB), Libe Washburn (UCSB), Anna Weinstein (CA Audubon), Stephen Whitaker (CINP), David Whittall (NOS NCCOS), Greg Williams (NMFS NWFSC).

Acknowledgements

Indicator Portfolio and Conceptual Model Reviewers

Kelly Andrews (NMFS NWFSC), Jenn Caselle (UCSB), Jason Cope (NMFS NWFSC), Toby Garfield (NMFS SWFSC), Correigh Greene (NMFS NWFSC), John Harms (NMFS NWFSC), Chris Harvey (NMFS NWFSC), Elliott Hazen (NMFS SWFSC), David Kushner (CINP), Kevin Lafferty (UCSB; USGS), Andrew Leising (NMFS SWFSC), Milton Love (UCSB), Sam McClatchie (NMFS SWFSC), Sharon Melin (NMFS AFSC), Robert Miller (UCSB; SBC MBON), Dan Reed (UCSB), Ben Ruttenburg (California Polytechnic State University), Donna Schroeder (BOEM), Isaac Schroeder (NMFS SWFSC), Steve Schroeter (UCSB), David Siegel (UCSB), Joshua Sprague (CINP), Andrew Thompson (NMFS SWFSC), Nick Tolimieri (NMFS NWFSC), John Ugoretz (CDFW), Robert Warner (UCSB), Libe Washburn (UCSB), Steve Wertz (CDFW), Stephen Whitaker (CINP), Crow White (California Polytechnic State University)

Content Contributors and Reviewers for the State of Ecosystem Services

Cheryl Chen (Ecotrust), Julia Coates (CA DFW), Jonna Engel (CA Coastal Commission), Phyllis Grifman (USC Sea Grant), Chris La Franchi (Natural Equity), Doug Lipton (NMSF ST), Doug McCauley (USCB/BOI), Andrea Mills (Island Packers), Seaberry Nachbar (NOAA ONMS), Karma Norman (NWFSC CCIEA), Donna Schroeder (BOEM), Robert Schwemmer (NOAA ONMS), Stephen Stohs (NMFS SWFSC), Mark Steele (Cal State Northridge), Bob Warner (UCSB)

Acknowledgements

Chumash Community Contributors

Alicia Cordero (Chumash community seat alternate, Channel Islands National Marine Sanctuary Advisory Council)

Luhui Isha Waiya (Chumash community seat primary member, Channel Islands National Marine Sanctuary Advisory Council)

Chumash Women's Elders Council: Georgiana Sanchez, Sue Diaz, Martha Jaimes, Mena Moreno, Deborah Sanchez, Diane Valenzuela, Veronica Vasquez, and Jan Ward Olmstead

Internal Report Development and Review

Mari Cajandig (NOS ONMS CINMS), Anita Harrington (NOS ONMS CINMS), Chris Mobley (NOS ONMS CINMS), Katie Spidalieri (NOS ONMS), Mitchell Tartt (NOS ONMS)



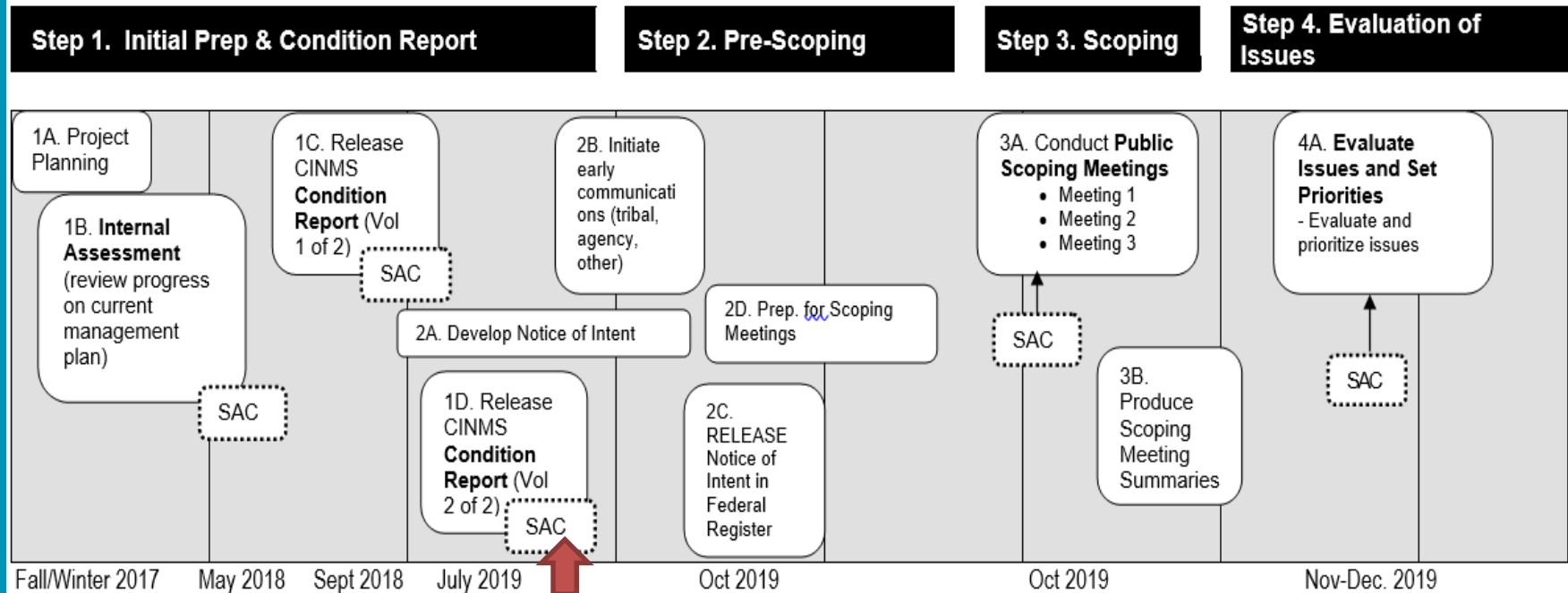
CINMS Management Plan Update Process

CINMS Management Plan Revision Process



DRAFT: Management Plan Review Process

July 2019



CINMS Management Plan Revision Process



Step 5. Characterize Priority Issues and Develop Recommendations

5A. Characterize Issues
Define any needed SAC Working Groups to help with:

- Issue Descriptions
- Problem Statements
- Desired Outcomes
- Draft Strategies

SAC

SAC

Working Groups
-WG 1
-WG 2
-WG 3

5B. Develop Draft Strategies

Informational Workshops, if needed, with SAC meetings

SAC

5C. Input on Priority of Strategies

Step 6. Develop Management Plan (MP)

6A. Conduct Formal Consultations (ongoing)

6B. Develop Draft Management Plan (DMP) and associated NEPA document

- Background
- Alternatives
- Actions Plans

SAC

6C. Develop Special Assessments as needed

- Socioeconomic
- Cultural/Historic
- Other

CINMS Management Plan Revision Process



Step 6. (Continued)

6D. Assemble DMP and NEPA document

6E. Assemble regulatory package if needed

6F. Obtain Clearances through NOAA and DOC as needed

6G. Completion of DMP

Step 7. Public Comment on Draft Management Plan (DMP)

7A. Planning and Preparation for Public Hearings

SAC

7B. Hold Public Hearings on DMP

SAC

Step 8. Produce Final Management Plan (FMP)

8A. Summarize and Analyze Public Comments

8B. Revise DMP, Develop FMP

SAC

8C. Obtain clearance for FMP and associated docs

8D. Release and Distribute FMP and associated docs

NOTE: The process duration for a management plan update is directly related to the complexity of proposed changes. For example, changes to regulations, boundaries, or the sanctuary's terms of designation may extend the project beyond an anticipated schedule.

CINMS Management Plan Revision

Process: Notice of Intent



❑ **Targeted publication schedule:** early October, 2019

Will contain:

❑ **Background information**

❑ **Basic information for commenting, accessing documents, and attending a public scoping meeting**

❑ **Preliminary Priority Topics/Themes:**

Partnership-Based Management

Climate Change

Collaborative Research and Monitoring

Protection of Sanctuary Resources

Education, Outreach, and Community Science

CINMS Management Plan Revision Process: Public Scoping Meetings



☐ Locations being considered:

Poinsettia Pavilion, Ventura

Faulkner Gallery, Santa Barbara Library

☐ Meeting structure and process considerations

CINMS Management Plan Revision Process: Advisory Council Roles during Initial Process Steps



- ❑ Provide notice about public scoping hearings and commenting opportunity; help boost public awareness and participation
- ❑ Participate in at least one of the public scoping hearings
- ❑ Help staff sort through the public scoping input, providing structured input on prioritization of issues to be addressed
- ❑ Help staff identify which issues need additional investigation, and how to approach that (e.g., formation of working groups or subcommittees)



NATIONAL MARINE
SANCTUARIES

CHANNEL ISLANDS



Additional Condition Report Slides *(if needed)*



ONMS Condition Reports

Goals of Report

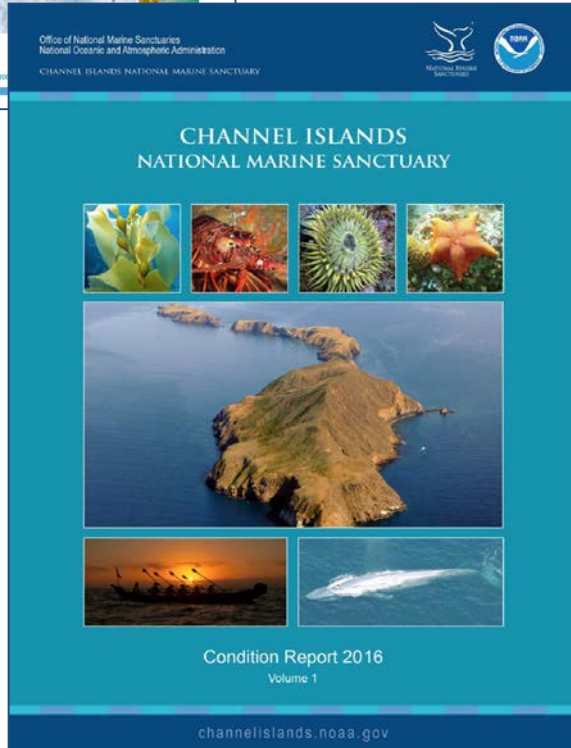
- Assess current condition of site and system

Site level

- Updated understanding of condition and trends since 2009 using NEW information
- Identify knowledge gaps and future research priorities
- Education and outreach tool & products
- Identify issues and topics for management plan review

System level:

- Determine if the system is achieving its goals
- Reporting tool to congress, NOAA, DOC



*Updated and **NEW & IMPROVED*** Condition Report Structure

Volume 1

Site History & Resources

Driving Forces (NEW)

Pressures on the Sanctuary Resources

State (Status & Trends) of Sanctuary Resources

Volume 2

Ecosystem Services

Sanctuary's Response to Pressures

Appendices

Driving Forces & Pressures on Sanctuary Resources



Topics covered

- Vessel Traffic
- Non-indigenous Species
- Ocean Noise
- Commercial and Recreational Fishing
- Energy Development Activities
- Pollutants
- Marine Debris
- Visitor Use
- Climate Variability

NEW CINMS Ratings

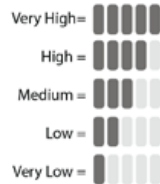
New Status, Trend and Confidence Rating System



▲ = Improving — = Not Changing ▼ = Worsening

? = Undetermined N/A = Not Applicable

Confidence Scale:



EXAMPLE:

This symbol indicates the condition was rated "fair" with "medium confidence" and a "worsening" trend with "very high confidence."



Questions		CINMS Rating			
Human Dimensions		Confidence	Status	Trend	Confidence
1	Influential Drivers		Fair	▼	
2	Human Activities and Water Quality		Good/Fair	?	
3	Human Activities and Habitat		Fair	?	
4	Human Activities and Living Resources		Fair	▼	
5	Human Activities and MAR		Fair	—	
Water Quality					
6	Eutrophic Condition		Good	—	
7	Human Health Risks		Good/Fair	—	
8	Climate Drivers		Fair	▼	
9	Other Stressors		Undertermined	?	
Habitat					
10	Integrity of Major Habitats		Fair	▼	
11	Contaminants in Habitat		Good/Fair	—	
Living Resources					
12	Keystone and Foundation species		Fair	▼	
13	Other Focal Species		Fair	?	
14	Non-Indigenous Species		Fair	▼	
15	Biodiversity		Fair	?	
Maritime Archaeological Resources (MAR)					
16	Integrity of MAR		Fair	▼	
17	MAR Threat to Environment		Good/Fair	—	

New Ratings Compared to 2009

Questions		2009 Rating	
Human Dimensions			
	N/A	N/A	
4	Human Activities & WQ	—	
8	Human Activities & Habitat	▲	
14	Human Activities & LR	▼	
17	Human Activities & MAR	▲	
Water Quality			
2	Eutrophic Condition	—	
3	Human Health Risks	—	
1	Multiple Stressors (including climate)	?	
Habitat			
5/6	Major/Biologically-structured	?	—
7	Contaminants in Habitat	▲	
Living Resources			
12/13	Key Species Status/Condition	—	?
11	Non-indigenous Species	▼	
9	Biodiversity	?	
Maritime Archaeological Resources			
15	Integrity of MAR	▼	
16	MAR Threat to Environment	▲	

Questions		CINMS Rating	
		Confidence	Status
			Trend Confidence
1	Influential Drivers	Fair	▼
2	Human Activities and Water Quality	Good/Fair	? ▼
3	Human Activities and Habitat	Fair	? ▼
4	Human Activities and Living Resources	Fair	▼
5	Human Activities and MAR	Fair	—
Water Quality			
6	Eutrophic Condition	Good	—
7	Human Health Risks	Good/Fair	—
8	Climate Drivers	Fair	▼
9	Other Stressors	Underdetermined	? ▼
Habitat			
10	Integrity of Major Habitats	Fair	▼
11	Contaminants in Habitat	Good/Fair	—
Living Resources			
12	Keystone and Foundation species	Fair	▼
13	Other Focal Species	Fair	? ▼
14	Non-Indigenous Species	Fair	▼
15	Biodiversity	Fair	? ▼
Maritime Archaeological Resources (MAR)			
16	Integrity of MAR	Fair	▼
17	MAR Threat to Environment	Good/Fair	—



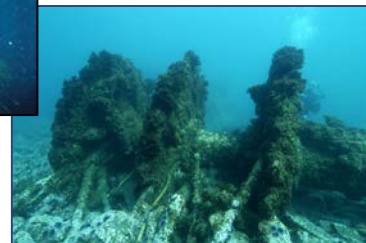
★
Stable or Improved compared to 2009

★
Worsened compared to 2009

Summary of Findings

Resources that are healthy or appear stable

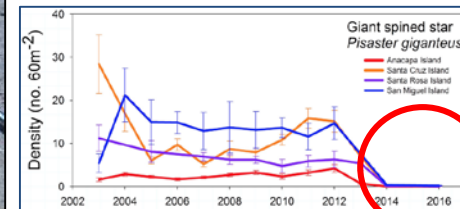
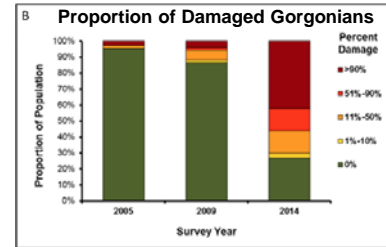
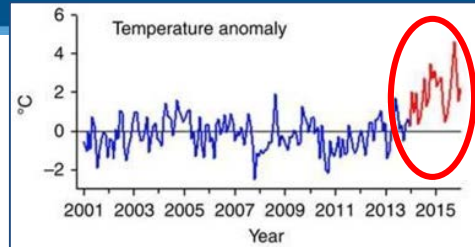
- Eutrophic conditions (nutrient inputs)
- Water safety for swimming and recreation
- Shoreline and seafloor habitat
- Many kelp forest and demersal fish species
- Overall native sanctuary biodiversity
- Maritime archaeological resources



Summary of Findings

Concerns

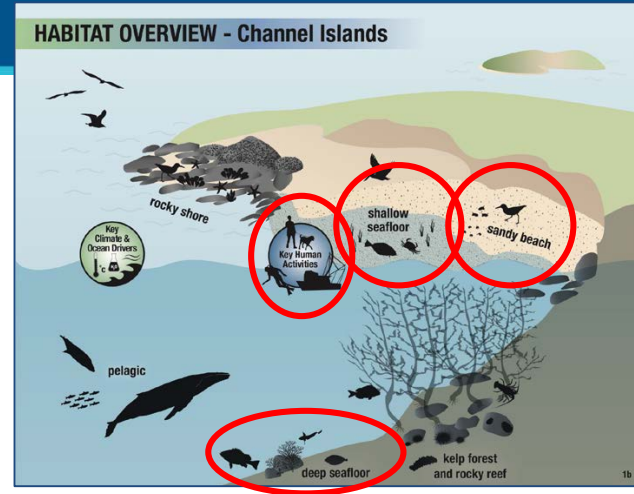
- Warm water event
- Harmful Algal Blooms (HABs)
- Impacts of global climate change
- Some habitat-forming species
- Invasive species in kelp forest
- Disease in sea stars
- Marine debris



Summary of Findings

Important information gaps

- **Status of Beaches and Soft-bottom habitats**
- **Characterization and Monitoring in Deeper Habitat**
- **Human activities:** How much and what are impacts?
- **Biodiversity:** What are the best metrics to track BD?
- **Global Climate Change:** Current and likely future impacts?
- **Marine Debris:** How much, where, and what are impacts?
- **Noise and soundscape:** Sources, levels and potential impacts?
- **Contaminants and non-point source pollutants**
- **Data poor indicator species**



Updated and **NEW & IMPROVED** Condition Report Structure

Volume 1

Site History & Resources

Driving Forces (NEW)

Pressures on the Sanctuary Resources

State (Status & Trends) of Sanctuary Resources

Volume 2

Ecosystem Services

Sanctuary's Response to Pressures

Appendices

NEW Section: Ecosystem Services

Cultural (non-material benefits)

- Sense of Place
- Non-Consumptive Recreation
- Consumptive Recreation
- Science
- Education
- Maritime Heritage

Regulating (buffers to change)

- Coastal Protection

Final Rating Scheme for Ecosystem Services.

Rating	Description of Findings
Good	The capacity to provide the ecosystem service has been either enhanced or remained unaffected.
Good/Fair	Unable to fully provide the ecosystem service due to prior or existing human activity, but performance is acceptable.
Fair	Ability to provide ecosystem service is compromised, and existing management would require enhancement to enable acceptable performance.
Fair/Poor	Ability to provide ecosystem service is compromised, and it is uncertain whether new or enhanced management would restore it.
Poor	Unable to deliver ecosystem service due to the extreme, pervasive or widespread nature of human activities, and it is doubtful that new or enhanced management would restore it.

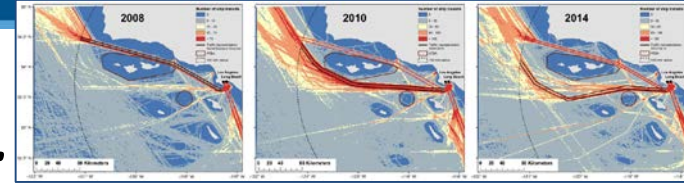
Provisioning (products and supplies)

- Food Supply - Commercial Fisheries
- Water
- Ornamentals
- Biotechnology
- Energy

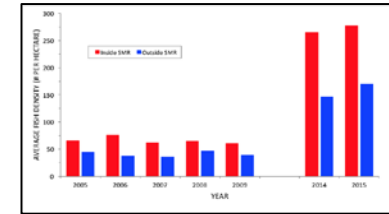
Chumash: Multi-service assessment from
Chumash community

Response section - coming soon

Highlight initiatives since 2009 that helped contribute to improved or stable outcomes....



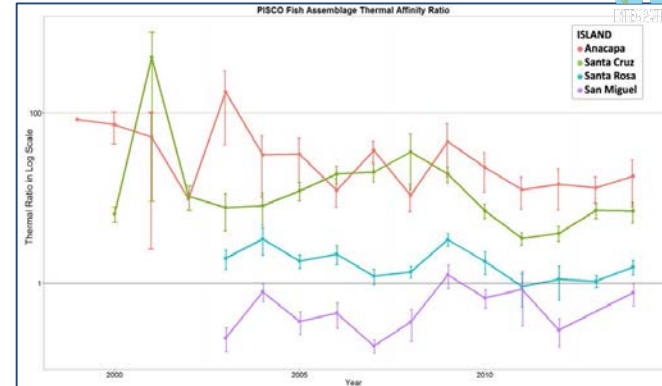
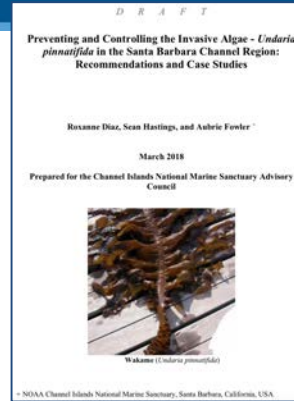
- Vessel Traffic: Speed Reduction Program, changes to TSS
- MPAs: monitoring shows improving conditions inside, education & outreach improving awareness
- Habitat protection: reducing anchor damage, improving wreck removal, MPAs reduce damage from bottom contact gear
- Seafloor mapping initiative, *Nautilus* exploration & education
- Marine Debris: reducing trap loss, shoreline clean-ups
- Maritime Archaeological Research and education



Response section - coming soon

Responses to new concerns....

- NIS: new *Undaria* research, resource protection & education efforts
- Ocean noise: new soundscape research on natural & man-made noise
- Contaminants: SCCWRP allocated 2018 sampling in the sanctuary
- Biodiversity: how to best track changes? continuing partnership with MBON & CCIEA
- Vessel activity: exploring AIS and VMS data
- Host deep sea coral planning meeting



Condition Report: Steps to Completion

Volume 1 report sections

- ✓ Indicator Development meetings
- ✓ New data compilation
- ✓ State section workshops
- ✓ Workshop and scientific expert review
- ✓ Invited Review (agency/partner)
- ✓ OMB required review
- ✓ Staff - revisions, layout and formatting
- ✓ **Report finalization on [website](#)
August 24th, 2018**

Volume 2 report sections

- ✓ HQ staff drafting text and ratings
 - ✓ Subject expert review
 - ✓ HQ staff revisions
 - ✓ Site staff review + response section
 - ✓ Chumash community section received
 - ✓ OMB required peer review
- Staff revisions (done), layout and formatting (in progress), clearance (coming next)
- Report finalization and release on website (*expected: May 2019*)